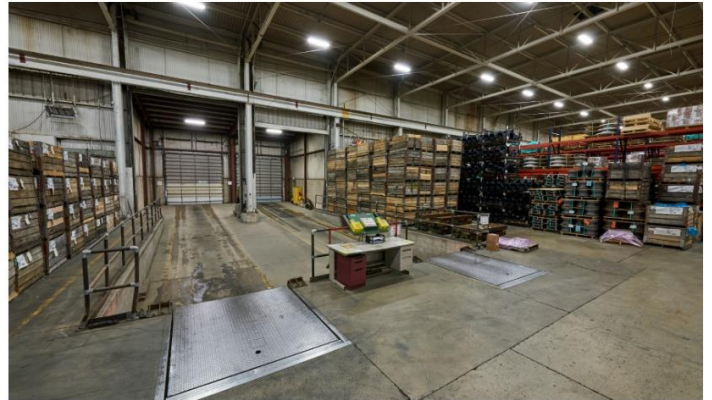


6900 South 10th Street
Oak Creek, Wisconsin

Property Type: Industrial



(2) 10 ton cranes and one (1) 15-ton crane all with 25' under hook bays with three (3) 380-ton bridge cranes set in two bays.

| | | | |
|-----------------------|----------------------------|----------------|---|
| PROPERTY TYPE | Industrial | ACREAGE | 4.5 |
| GSF | 53,00 | UNIT(S) | 1 |
| OFFICE SQUARE FOOTAGE | 5,400 5 private offices | CEILING HEIGHT | 35'; 25 feet under hook |
| YEAR BUILT | 1973 | POWER | 2,400 amp, 480 volt, three phase |
| YEAR RENOVATED | 2014 | DOCK(S) | 2 interior with levelers and crane access |